

**The London Group - Viewpoints**

**2 - 23 February 2017**

**Felix & Spear, London**







and

FELIX & SPEAR

Modern British and Contemporary Art

*VIEWPOINTS*

the natural world as source material

Thursday 2nd Feb - Thursday 23rd Feb 2017

Felix & Spear, 71 St Mary's Road, Ealing, London W5 5RG

Tues - Fri 10.30 - 18.00 Sat 11.00 - 16.00

[www.felixandspear.com](http://www.felixandspear.com) T: 020 8566 1574



Felix & Spear Gallery are pleased to present a small group exhibition of paintings by The London Group, an exhibiting group founded in early 20th century to organise modern art exhibitions in Britain.

From The London Group:

“Nearly twenty percent of the group’s ninety distinguished artists of this established collective, work from, or use as source material, the natural world. Their work varies through a variety of models of perceptual engagement. From the surreal to realism, narrative to abstraction a medley of individual styles as an eclectic mix of communication amongst peers.

Formed in 1913, The London Group offered additional exhibiting opportunities to artists and is one of the oldest artist led organisations in the world, operating without dogma or style. The London Group exhibitors in this exhibition are:

**David Shutt, Marenka Gabeler, Slav Blatton, Daniel Preece, Peter Clossick, Julie Held, Susan Wilson, David Tebbs, Tim Craven, Victoria Bartlett, Mike Thorpe, David Wiseman, Anthony Eyton RA, Jane Humphrey, Gus Cummins RA, Mark Dunford”**

ABOUT THE LONDON GROUP The London Group was set up in 1913 by thirty-two artists including Robert Bevan, Henri Gaudier Brzeska, Jacob Epstein, Duncan Grant, Wyndham Lewis, Lucien Pissarro and Walter Sickert, with the aim of creating a powerful artist-run group to act as a counter-balance to institutions such as the Royal Academy. The founding group created a unique structure for an organisation, that has gone on to successfully nurture the careers of many of Britain’s best-known artists.

Peter Clossick

*Santon*

Oil on board

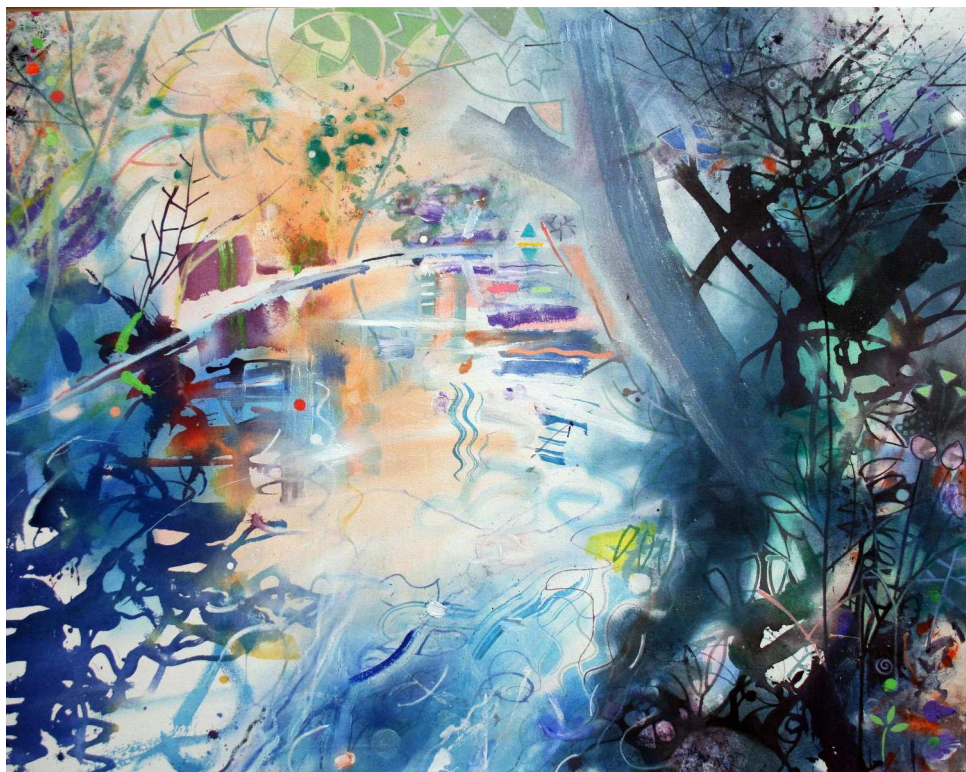
93cm x 73cm





David Wiseman  
*Woodland River Walk down to Three Cliffs,*  
*Gower*  
Acrylic on canvas  
76cm x 100cm





Anthony Eyton RA  
*Still Life of Pots and Fruit*  
Oil on canvas  
56cm x 61cm



David Tebbs  
*Docklands*  
Oil on canvas  
71cm x 91cm

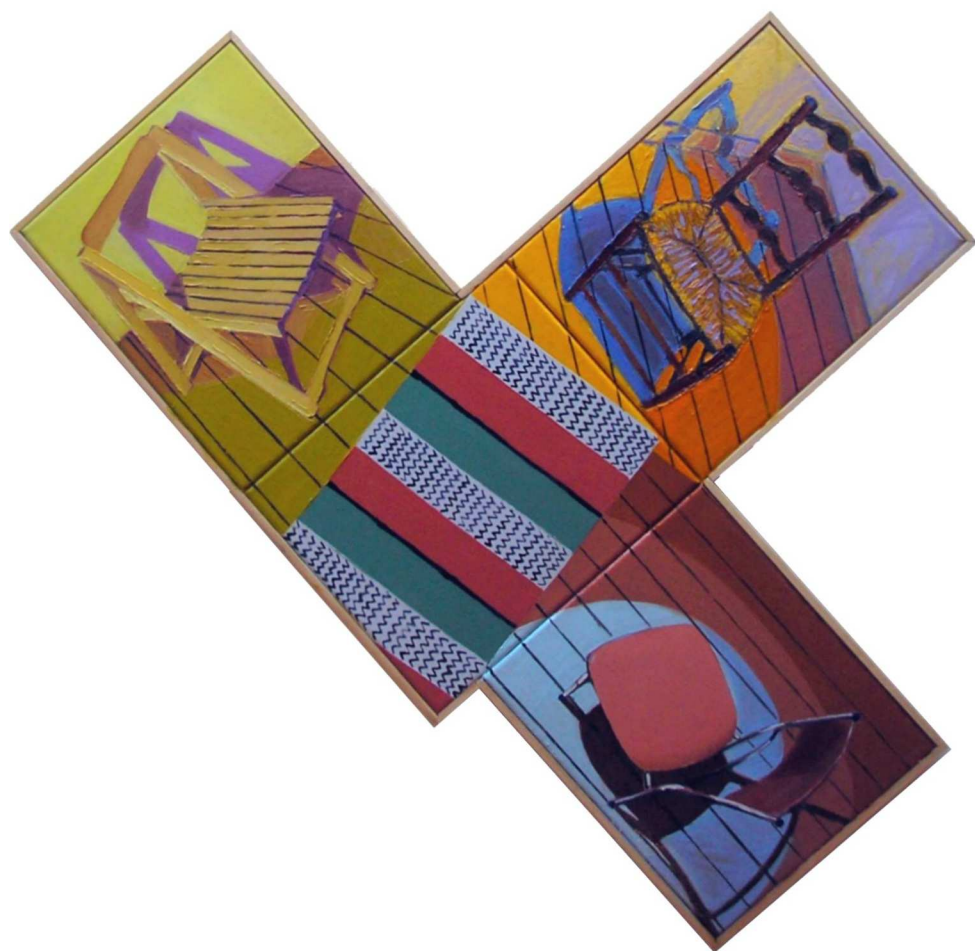


Victoria Bartlett  
*Singing Birds*  
Paper & mixed media  
85cm x 73cm





Mike Thorpe  
*Conversation Piece – Vaux*  
Oil on canvas  
84cm x 89cm

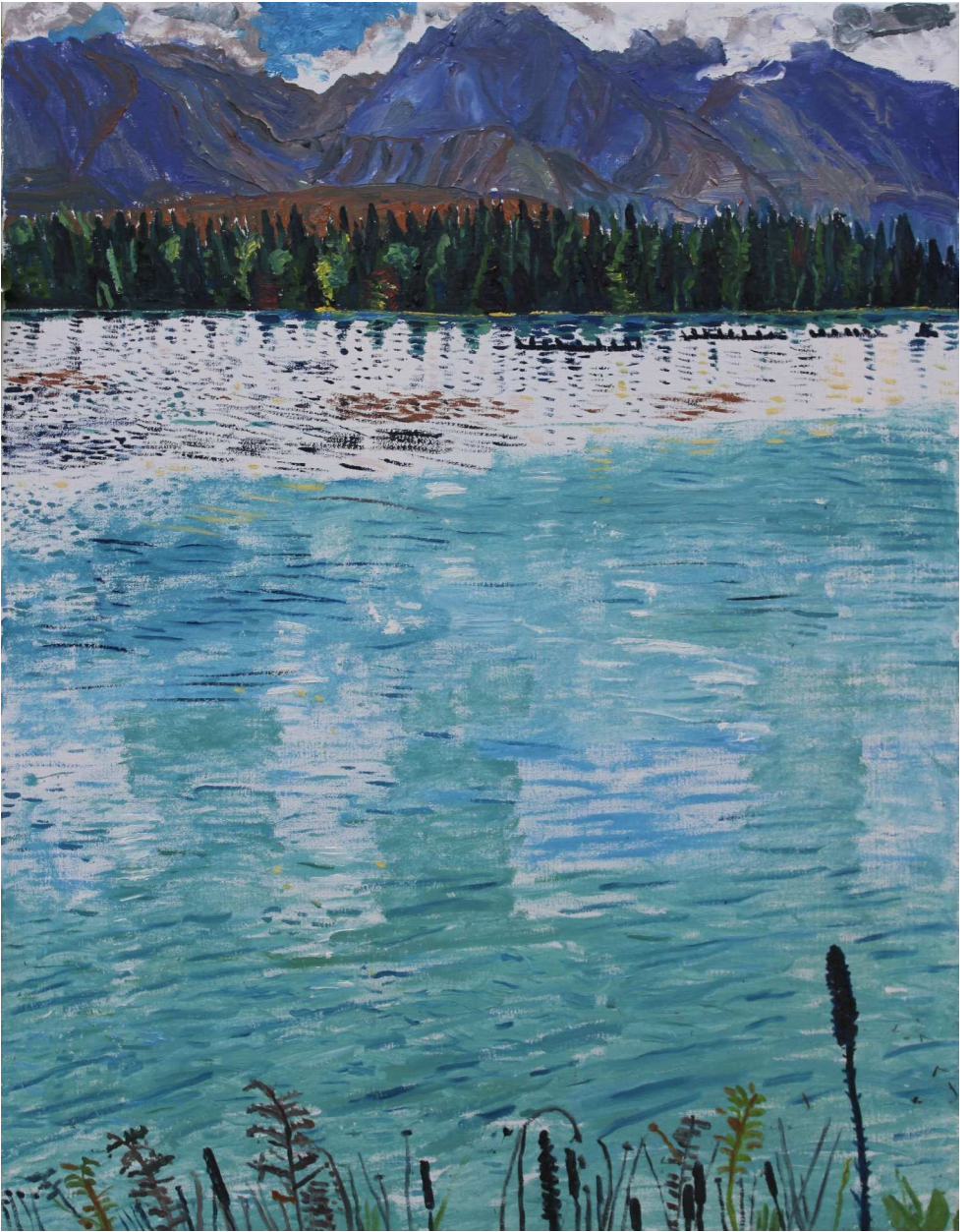


Daniel Preece  
*Thames and Wheel*  
Oil on canvas  
80cm x 100cm



Susan Wilson  
*The Maadi Cup at Lake RuaTaniwha*  
Oil on linen  
90cm x 71 cm





Marenka Gabeler  
*Aldeburgh Beach Lookout*  
Watercolour on paper  
43.5cm x 33.5cm



Jane Humphrey  
*Edge of The Plain*  
Acrylic on canvas  
30cm x 30cm



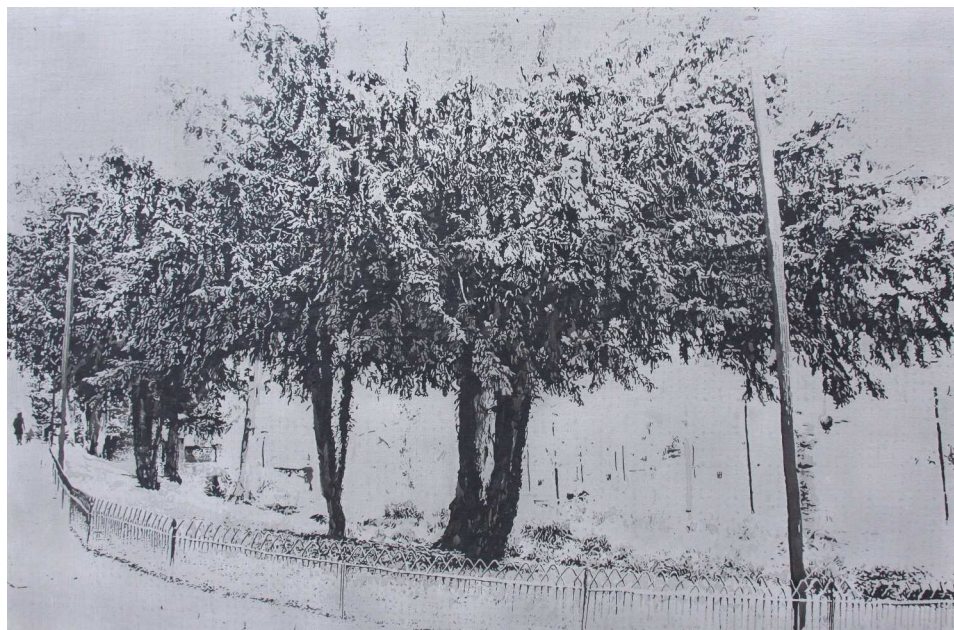


Slawomir Blatton  
*Study for Figure*  
Watercolour  
46cm x 64cm

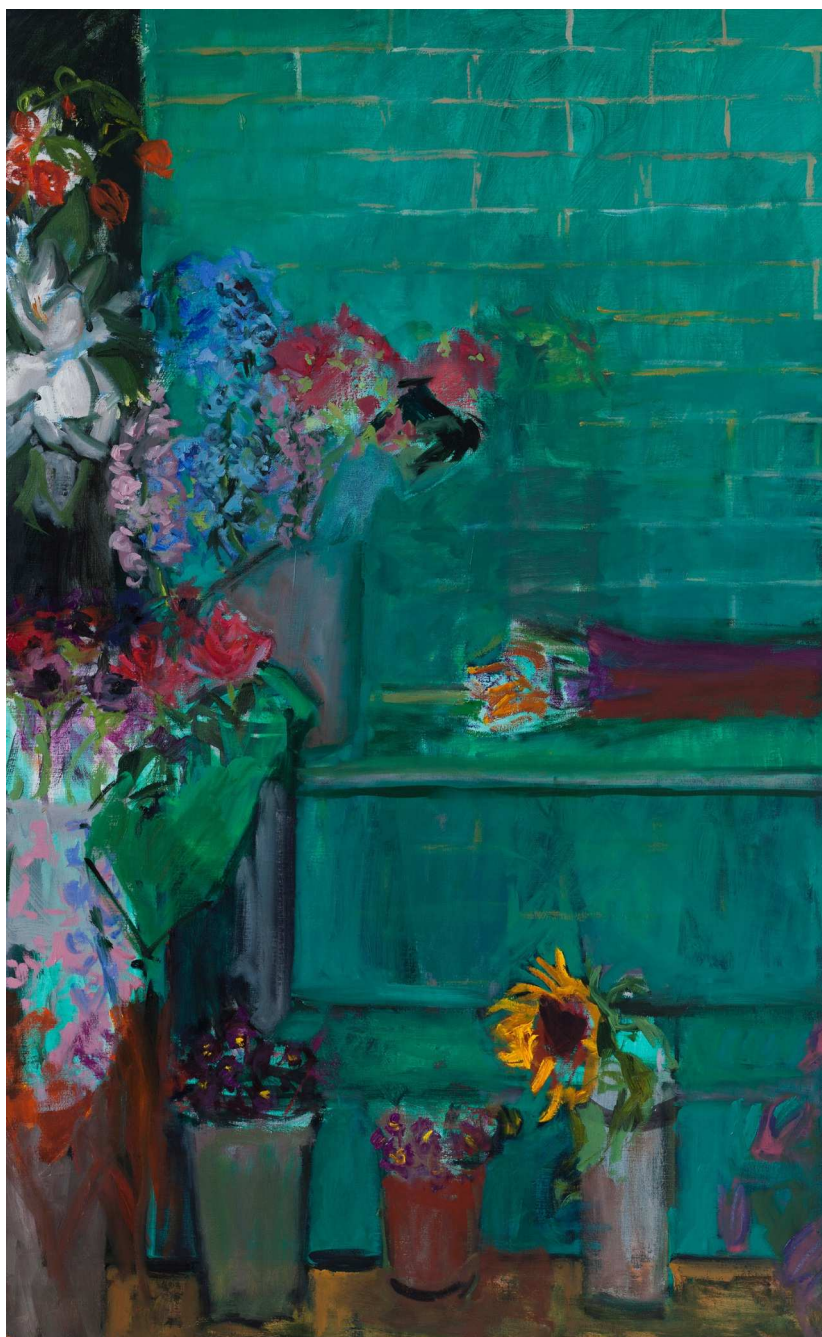




Tim Craven  
*Walsall Arboretum*  
Casein on canvas  
56cm x 76.2cm



Julie Held  
*Notting Hill Florist*  
Oil on canvas  
110cm x 67.5cm



David Shutt  
*A Box of Pomegranates*  
Oil on canvas  
96.5cm x 96.5cm





Gus Cummins RA  
*Re-assemble*  
Gouache  
58cm x 78cm



Mark Dunford  
*Red Tree, Summer*  
Oil on board  
81cm x 93cm









# FELIX & SPEAR

Modern British and Contemporary Art

71 St Mary's Road, London W5 5RG  
[www.felixandspear.com](http://www.felixandspear.com) Tel: 020 8566 1574